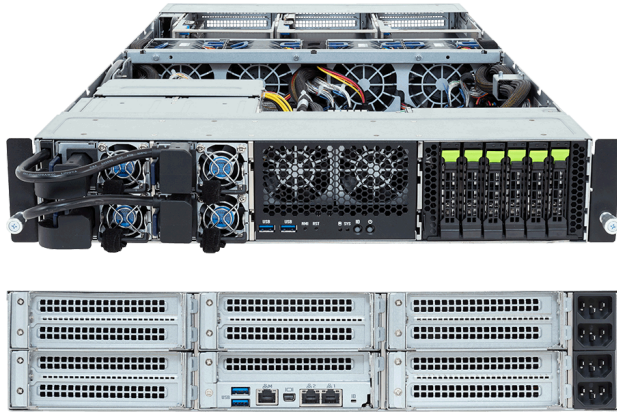


XV24-AX0-AAJ1

NVIDIA MGX™ Server - Intel® Xeon® 6900 - 2U DP 4 x PCIe Gen5 GPUs



Key Features

- Supports up to 4 x Dual slot Gen5 GPUs
 - 4 x NVIDIA H200 NVL PCIe GPUs with 2-way NVLink bridges
 - 4 x NVIDIA RTX PRO™ 6000 Blackwell Server Edition
- NVIDIA MGX™ modular server design
- Dual Intel® Xeon® 6900-Series Processors
- 12-Channel DDR5 RDIMM / MRDIMM, 24 x DIMMs
- 2 x 10 Gb/s LAN ports via Intel® X550-AT2
- 6 x 2.5" Gen5 NVMe/SATA/SAS-4 hot-swap bays
- 2 x M.2 PCIe Gen5 x2
- 4 x FHFL PCIe Gen5 x16 for GPUs
- 2 x FHFL PCIe Gen5 x16 for NVIDIA ConnectX®-7 NICs
- 1 x FHFL PCIe Gen5 x16 for NVIDIA® BlueField®-3 DPUs
- 3+1 2000 W 80 PLUS Titanium redundant power supplies

Specification

Dimensions	2U (W438 x H87 x D900 mm)	PCIe Expansion Slots	4 x FHFL PCIe Gen5 x16, for GPUs 2 x FHFL PCIe Gen5 x16, for NICs 1 x FHFL PCIe Gen5 x16, for DPUs
Motherboard	MAX4-MG0	I/O Ports	Front: 2 x USB 3.2 Gen1 Rear: 2 x USB 3.2 Gen1, 1 x Mini-DP, 2 x RJ45, 1 x MLAN
CPU	Intel® Xeon® 6 Processors - Intel® Xeon® 6900-Series Processors Dual processor, TDP up to 500 W	TPM	1 x TPM header (SPI), Optional TPM 2.0 kit: CTM012 1 x PRoT connector (only enabled on RoT SKU)
OS Compatibility	OS Support List	Power Supply	3+1 2000 W 80 PLUS Titanium redundant power supplies AC Input: 100-240 V
Socket	2 x LGA 7529 (Socket BR)	System Fans	4 x 80x80x80mm
Chipset	System on Chip	Operating Properties	Operating: 10°C to 35°C, 8% to 80% (non-condensing) Non-operating: -40°C to 60°C, 20% to 95% (non-condensing)
Memory	12-Channel DDR5 RDIMM/MRDIMM, 24 x DIMMs [RDIMM] Up to 6400 MT/s [MRDIMM] Up to 8800 MT/s ^[1] ^[1] MRDIMMs are supported only on select Intel® Xeon® 6 processors with P-cores.	Packaging Content	1 x XV24-AX0-AAJ1 2 x CPU heatsinks 1 x Mini-DP to D-Sub cable 2 x GPU power cables (16-pin, 620mm) 2 x GPU power cables (16-pin, 750mm) 2 x Carriers 1 x 3-Section Rail kit
LAN	2 x 10 Gb/s LAN (1 x Intel® X550-AT2), Support NCSI 1 x 10/100/1000 Mb/s Management LAN	Ordering Part Numbers	6NXV24AX0DR000AAJ1*
Video	Integrated in ASPEED® AST2600 - 1 x Mini-DP	Optional Parts	- Chassis intrusion switch: 25HA1-R28390-U1R - Cable Management Arm: 25HB2-2AA700-K0R
Storage	Front hot-swap: 6 x 2.5" Gen5 NVMe/SATA/SAS-4 ^[1] Internal M.2: 2 x M.2 (2280/22110), PCIe Gen5 x2 ^[1] Storage card is required to support SATA and SAS drives.		
RAID	Onboard VROC key header		



Learn more at: <https://www.gigabyte.com/Enterprise>

* All specifications are subject to change without notice. Please visit our website for the latest information.

* All trademarks and logos are the properties of their respective holders.

© 2026 Giga Computing Technology Co., Ltd. All rights reserved.

Last updated: Apr 7, 2026

Designed by

